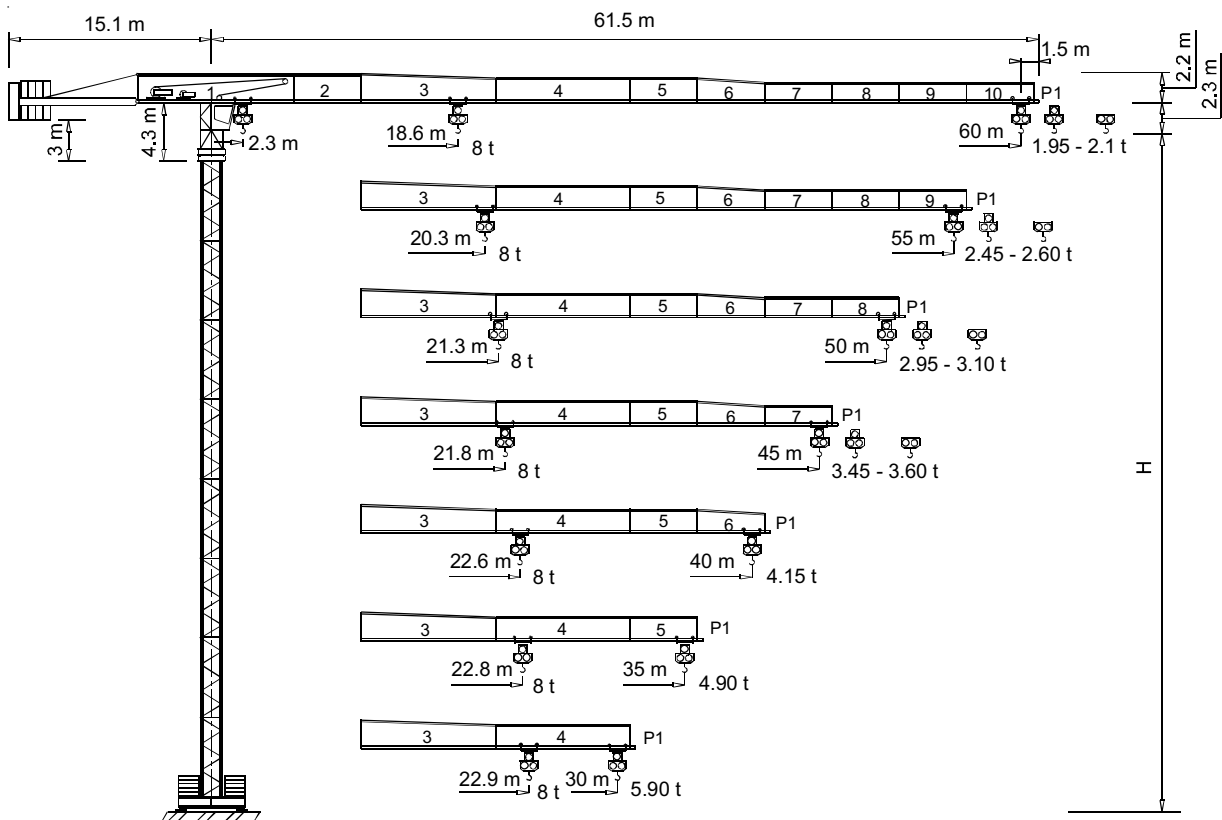




Gru a torre "Flat Top"

"Flat Top" Tower Crane • Grue à tour "Flat Top"

"Flat Top" Turmdrehkran • Grua torre "Flat Top"



CE FEM 1.001 A3

THE ULTIMATE CRANE™

Dati illustrativi non impegnativi
Con riserva di modifica senza preavviso

Specifications and data not binding
Subject to modification without notice

Données techniques seulement indicatives
Modifications réservées sans préavis

Angaben und Beschreibung unverbindlich
Änderungen vorbehalten ohne weitere Mitteilung

Dibujos y datos sin compromiso
Modificaciones reservadas sin preaviso

UTE.DOC.REV.004

“CTT” 161-8 TS

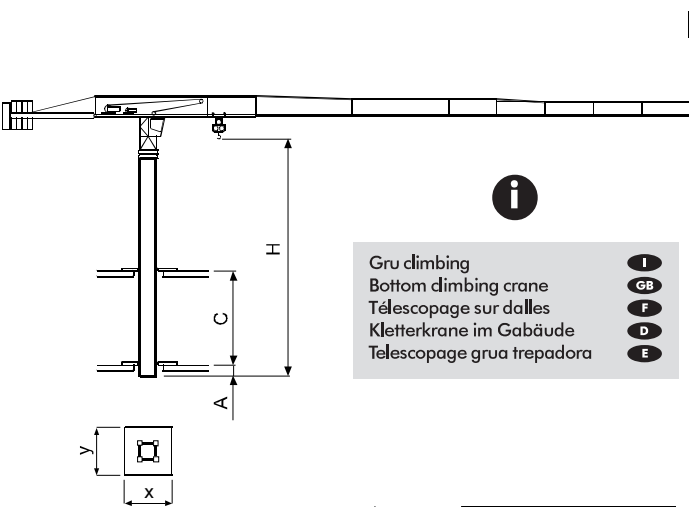


CTT 161-8

Diagramma di portata **I** **Courbes de charges** **F** **Curvas de cargas** **E**
Load Diagram **GB** **Lastkurven** **D**

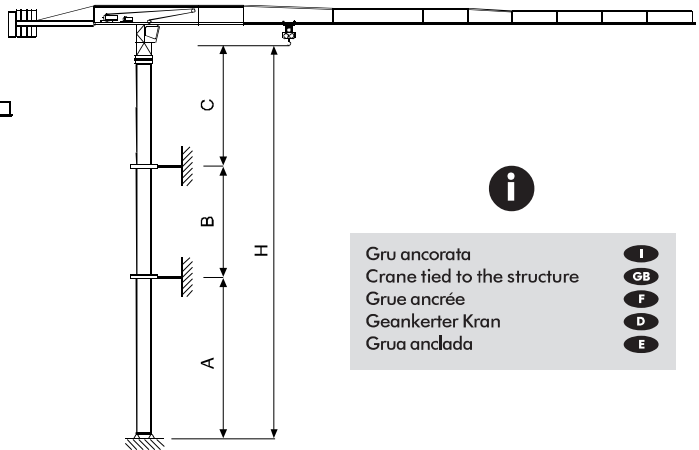
		CTT 161-8											
		10	15	20	25	30	35	40	45	50	55	60	
4 t	- 34.9 m	4	4	4	4	4	3.99	3.42	2.98	2.63	2.34	2.1	
4 t	- 33.96 m	4	4	4	4	4	3.86	3.28	2.84	2.48	2.19	1.95	
8 t	- 18.64 m	8	8	7.39	5.72	4.63	3.86	3.28	2.84	2.48	2.19	1.95	
4 t	- 38.1 m	4	4	4	4	4	4	3.78	3.3	2.91	2.6		
4 t	- 36.97 m	4	4	4	4	4	4	3.64	3.15	2.77	2.45		
8 t	- 20.26 m	8	8	8	6.31	5.11	4.27	3.64	3.15	2.77	2.45		
4 t	- 40.14 m	4	4	4	4	4	4	4	3.51	3.1			
4 t	- 38.91 m	4	4	4	4	4	4	3.87	3.36	2.95			
8 t	- 21.31 m	8	8	8	6.68	5.42	4.53	3.87	3.36	2.95			
4 t	- 41.06 m	4	4	4	4	4	4	4	3.6				
4 t	- 39.78 m	4	4	4	4	4	4	3.97	3.45				
8 t	- 21.78 m	8	8	8	6.85	5.56	4.65	3.97	3.45				
4 t	- 40 m	4	4	4	4	4	4	4					
8 t	- 22.57 m	8	8	8	7.13	5.8	4.85	4.15					
4 t	- 35 m	4	4	4	4	4	4						
8 t	- 22.76 m	8	8	8	7.2	5.85	4.9						
4 t	- 30 m	4	4	4	4	4							
8 t	- 22.92 m	8	8	8	7.26	5.9							

Altre installazioni **I** **Autres implantations** **F** **Otras implantaciones** **E**
Other configurations **GB** **Aufstellmöglichkeiten** **D**



i
 Gru climbing
 Bottom climbing crane
 Télescopage sur dalles
 Kletterkrane im Gebäude
 Telescopage grua trepadora

I
GB
F
D
E



i
 Gru ancorata
 Crane tied to the structure
 Grue ancrée
 Geankerter Kran
 Grua anclada

I
GB
F
D
E

	TS16	TS21
	[m]	
C_{min}		
H_{max}	i	i
x		
y		

	TS16 R1	TS21 R3	TS21 R4
	m		
$A_{min/max}$	30 / 36	30 / 45	45 / 65
$B_{min/max}$	17.7 / 23.6		
C_{max}	24	35	35
H_{max}	i		



CTT 161-8

Torre **I**

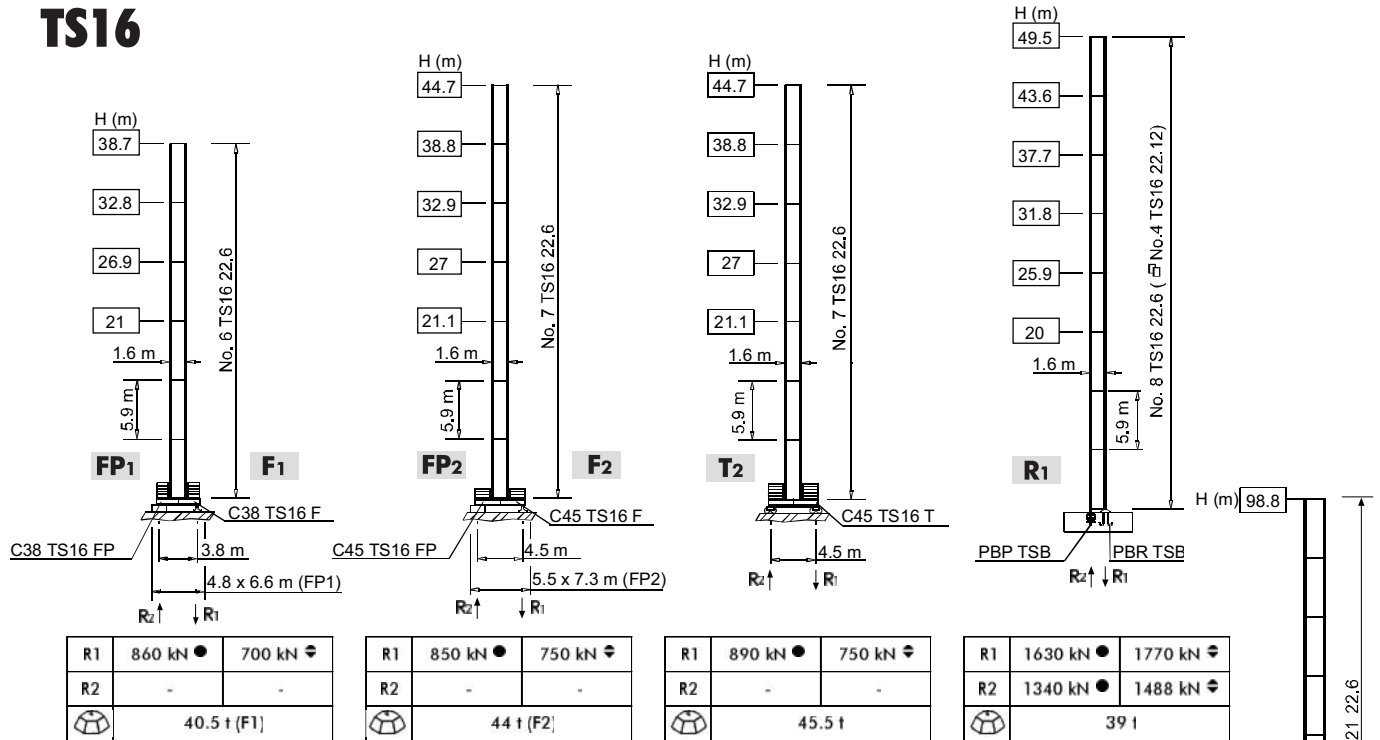
Tower **GB**

Tour **F**

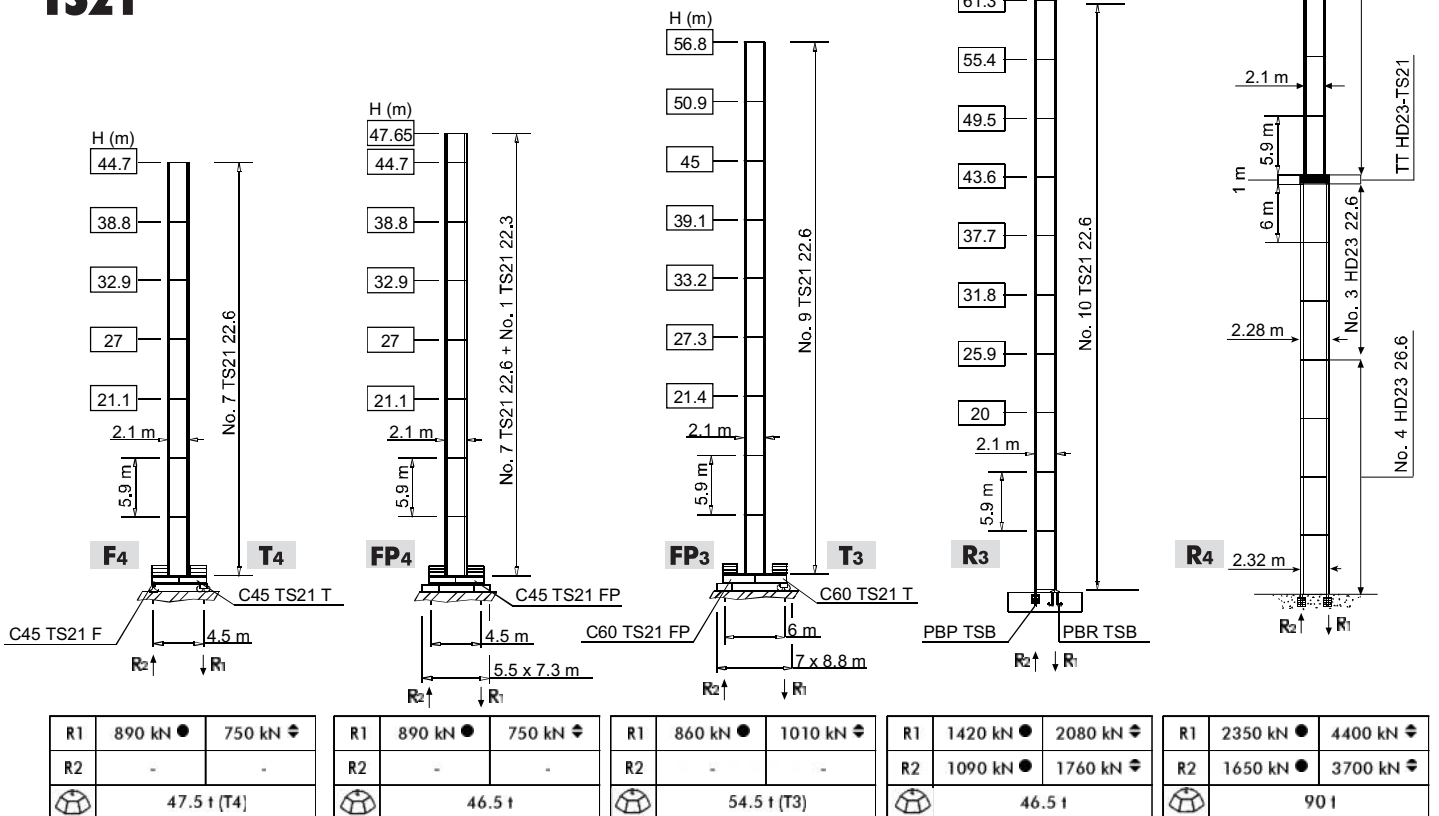
Turm **D**

Mástil **E**

TS16



TS21



H	Altezza massima s. g.	I	Max. under hook height	GB	Hauteur maxi. sous crochet	F	Höchste Hackenhöhe	D	Maxima altura bajo gancho	E	
●	In servizio		In service		En service		In Betrieb		En servicio		
◊	Fuori servizio		Out of service		Hors service		Außer Betrieb		Fuera de servicio		
	A vuoto, senza zavorra, braccio max., altezza max.		Without load, without ballast, max. jib and max. height		A vide, sans lest, avec flèche et hauteur maximum		Ohne Last und Ballast, mit Maximalausleger und Maximalhöhe		Sin carga, sin lastre, con pluma y altura máxima		
	Alternativa		Alternative		Alternative		Alternativlösung		Alternativa		



CTT 161-8

Meccanismi
Mechanisms



Mécanismes
Antriebe



Mecanismos



	24 APC 40 30 AFC 40	65 * kVA 70 * kVA	400 V - 50 Hz 400 V - 50 Hz / 460 V - 60 Hz
			 2000/14/CE

* Gru senza traslazione / Crane without travelling equipment / Grue sans translation / Krane ohne Schienenfahren / Grúa sin traslación

		m/min	f	kW		
	24 APC 40		5	4	24	278 m
			29	4		
			58	2		
			2.5	8		
			14.5	8		
	30 AFC 40 (VARIANT)		29	4	30	278 m 350 m (LEBUS)
			0 ⇌ 3	4		
			3 ⇌ 10	4		
			10 ⇌ 41	4		
			41 ⇌ 66	2.38		
		66 ⇌ 82	1.86			
		0 ⇌ 1.5	8			
		1.5 ⇌ 5	8			
		5 ⇌ 20.5	8			
		20.5 ⇌ 33	4.76			
		33 ⇌ 41	3.72			

	DVF 3 5 D1 (VARIANT)	0 ⇌ 6 ⇌ 32 ⇌ 64 m/min		5 kW
	SSR 2 2 65	0.7 r.p.m. (50 Hz)	0.84 r.p.m. (60 Hz)	2 × 65 Nm
	▲ TAD 2RP 2M4	0 - 24 m/min		2 × 4 kW
	● TAD 2RG 4M3			4 × 3 kW

	▲	●
	Max. H [m]	
T₂	38.8	> 38.8
T₃	39.1	> 39.1
T₄	38.8	> 38.8

	I Sollevamento	I Hoisting	GB Levage	F Heben	D Elevación	E
	Traslazione carrello	Trolleying	Distribution	Katzfahren	Distribución	
	Rotazione	Slewing	Orientation	Schwenken	Orientación	
	Traslazione	Travelling	Translation	Schienenfahren	Traslación	
	Direttiva sul livello acustico	Directive on noise level	Directive sur le niveau acoustique	Richtlinie für den Schall-Leistungspegel	Directiva sobre el nivel acustico	
	Consultateci	Consult us	Nous consulter	Auf Anfrage	Consultarnos	
	Potenza totale richiesta	Power requirements	Puissance totale nécessaire	Geforderte Stromstärke	Potencia necesaria	
	Alimentazione	Power supply	Alimentation	Stromversorgung	Alimentación	

Gru Comedil s.r.l.

A Terex Company

Via S. Egidio 42/A, 33074 Fontanafredda (PN) - Italy
Tel. (+39) 0434 567 311 - Telefax (+39) 0434 998631

Internet e-mail: info@comedil.com
Internet home page: www.comedil.com

Divisione Automontanti

Via Alessandrina, 25 - 20095 Cusano Milanino (MI) - Italy
Tel. (+39) 02 613 16011 - Telefax (+39) 02 613 16034

Internet e-mail: info.CBR@comedil.com

www.terex-cranes.com